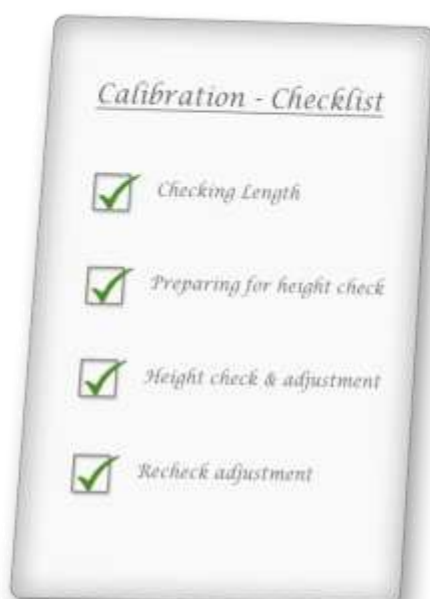


Allvis

Checking Calibration



Index

1.0 – Checking length	2
2.0 – Preparing for height check	3
3.0 – Check and adjust height	4
4.0 – Recheck adjustment	5
Note!.....	5

1.0 - Checking length



Place arm on a flat surface.



Close arm and turn on the display. Make sure that the display shows the value 900.



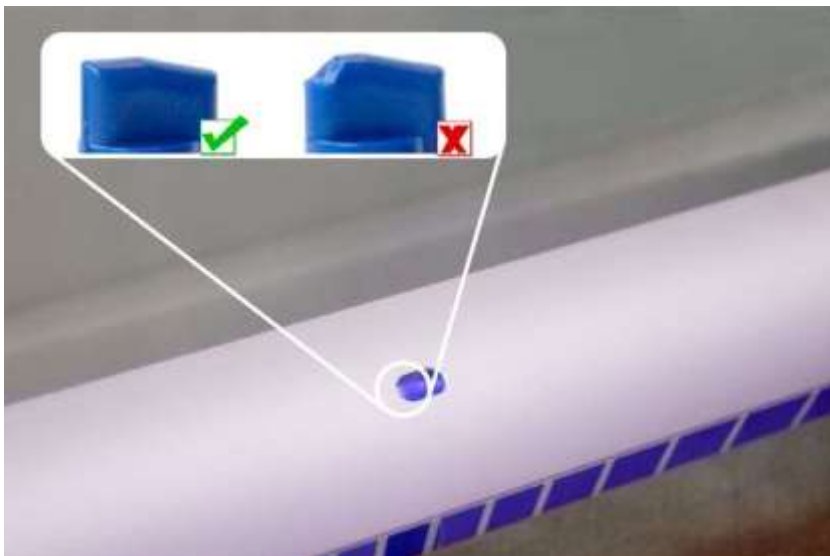
Extend arm fully.



Make sure that the display shows the value 2652.

Tolerance: +/- 2 mm.

If display is out of tolerance, call your distributor.



Check the 3 stop buttons for damage.

This is important for correct extended length.

If damaged, call your distributor.

2.0 – Preparing for height check



Mount tape on surface.



Mark a circle on the tape. Cup #22 helps.



Center round surface on the circle.



Lift the back of the arm.



Place tape under.



Mark the tape using the back of the arm.

3.0 – Check and adjust height



Center the arm over the both circles.



Rotate level 180° and adjust the bubble in center.



Rotate level back.



Rotate arm 180° and place it over circles.

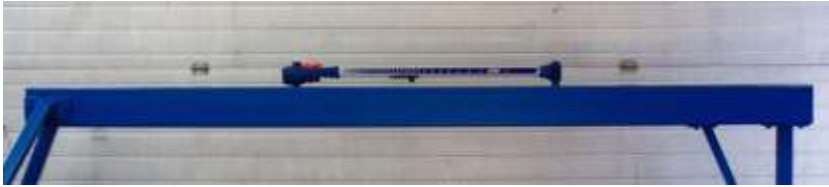


Check the bubble location. The bubble should be centered now. If not, adjust the bubble in the next step.



Turn both the adjusting screws until bubble half the distance.

4.0 – Recheck adjustment



Rotate arm to original position and center the arm to the both circles.



Rotate the level again and center the bubble.



Rotate the level back again.



Rotate the arm 180° and place it over the circles.



Read level.

Note!

If level is still out of adjustment, repeat from step 3.