

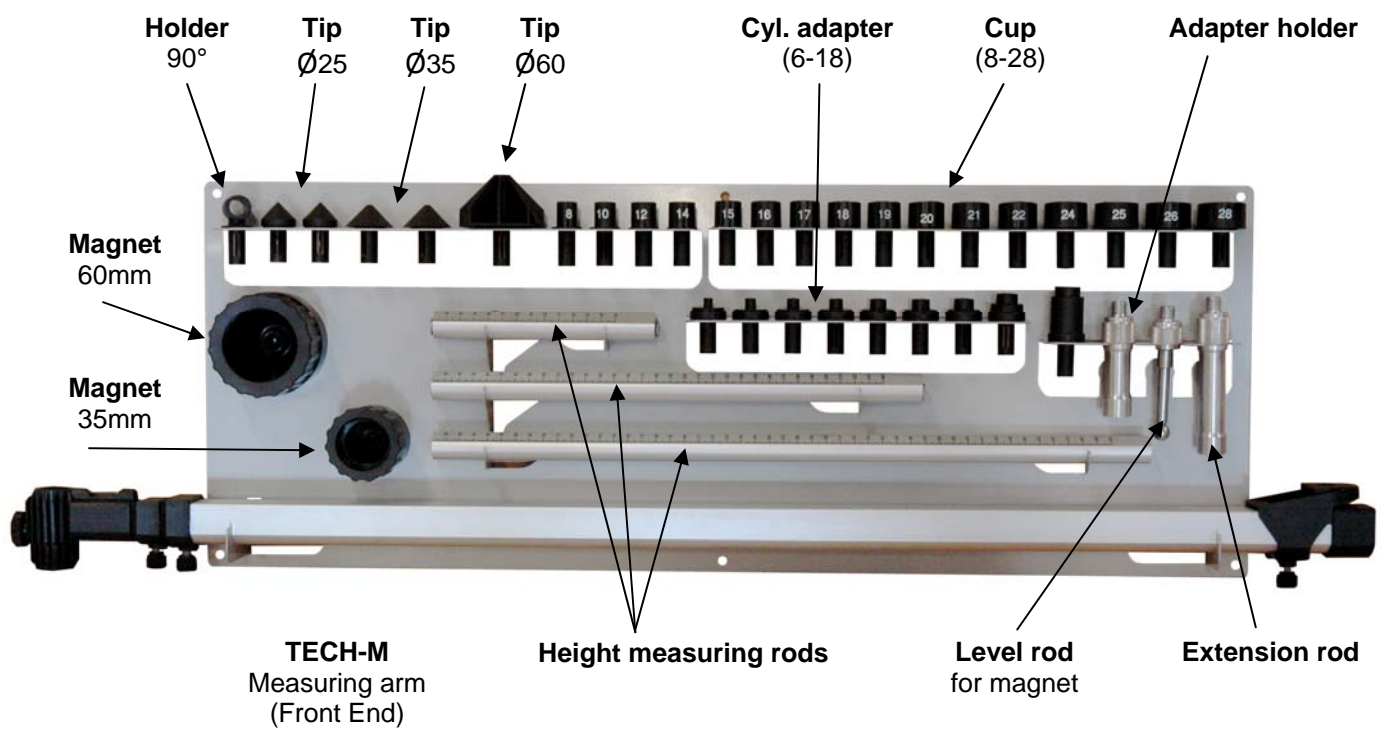


## **Comparative Measuring**

# Table of Contents

1.0 – TECH-M Parts .....	3
2.0 – Level control of the vehicle.....	4
3.0 – Prepare TECH-M for comparative measuring.....	5
4.0 – Mount the measuring arm under the vehicle.....	6
5.0 – Measure Line 1 (Length & height) .....	7
6.0 – Measure Line 2 (Length & height) .....	8
7.0 – Measure Line 3 (Cross measuring) .....	9
8.0 – Measure Line 4 (Cross measuring) .....	10

## 1.0 – TECH-M Parts



## 2.0 – Level control of the vehicle

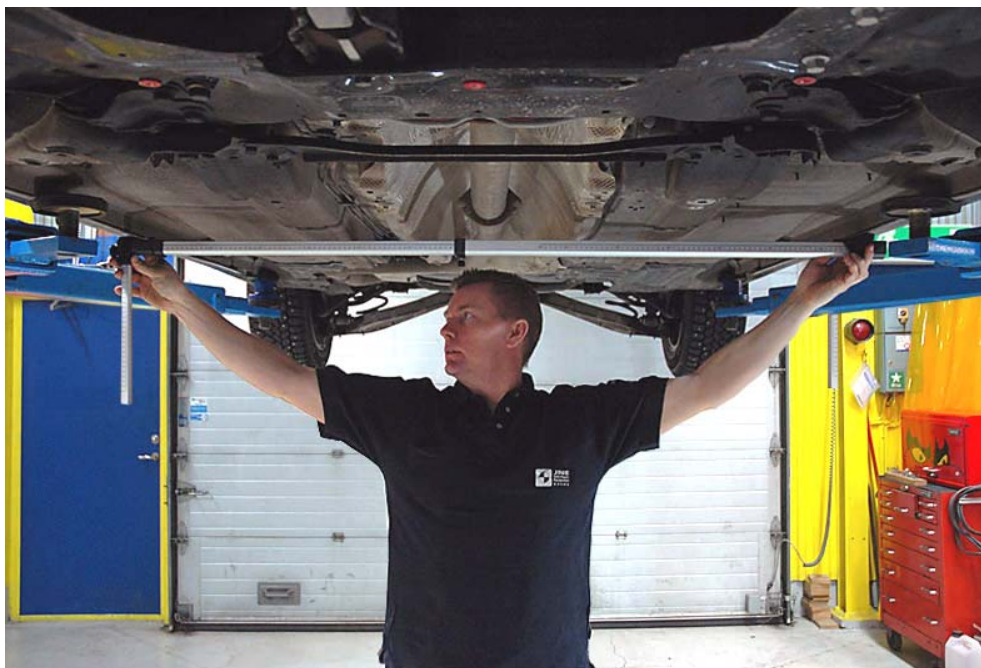


### Level side to side



Hold the measuring arm against the pinch weld on both rocker panels, to control the level of the vehicle. Adjust the height rod so that the water spirit is centred.

Turn the measuring arm 180°



Center the water spirit by lowering the front end and check the play.

Max play 10mm.

> 10mm play: Adjust the level of the vehicle.

### 3.0 – Prepare TECH-M for comparative measuring

1. Screw in the datum rod.



2. Snap on the magnet to the datum rod.



3. Lock the height measuring rod to the arm.



4. Snap in tip/cup to height measuring rod.



## 4.0 – Mount the measuring arm under the vehicle



### Mount the magnet - step by step



Choose a point in an undamaged symmetric pair of points.



Center the conical part of the magnet to the hole.



Push up the outer part of the magnet.



Set for measuring.

## 5.0 – Measure Line 1 (Length & height)



### Measure height



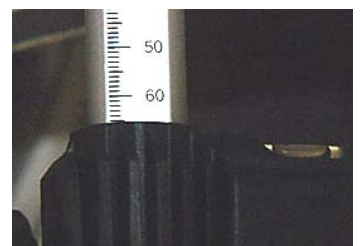
Center the tip in the measuring point.



Unlock the height measuring rod to adjust the level of the measuring arm.



Adjust the water spirit until it is centred. Lock the height measuring rod.



Height value for line 1.  
(Here: 65 mm)

### Measure length



Lock the screw and read the length value.  
(Here: 1346 mm)

## 6.0 – Measure Line 2 (Length & height)

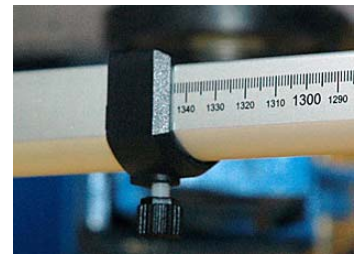
Move the measuring arm to the opposite side.



### Compare line 1 & 2



Center the tip in to the measuring point.



Read length (Here: 1345 mm) Difference = 1



Control water spirit.



If necessary, adjust the front end up or down to center the water spirit.



Read height (Here: 66 mm) and compare with the value from line 1 (65 mm). Difference = 1mm



## 7.0 – Measure Line 3 (Cross measuring)



### Check value – Line 3



Free the arm and extend it to the measuring point.



Lock the screw and read the scale. (Here: 1565 mm)

## 8.0 – Measure Line 4 (Cross measuring)



**Move the magnet to the other side**



To be able to measure line 4 the magnet must be moved to the corresponding point on the first side.

**Compare line 3 & 4**



Read the value for line 4 (Here: 1565 mm) and compare with the value from line 3 (1565 mm).

Difference = 0 mm